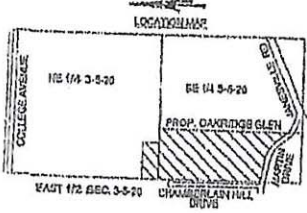
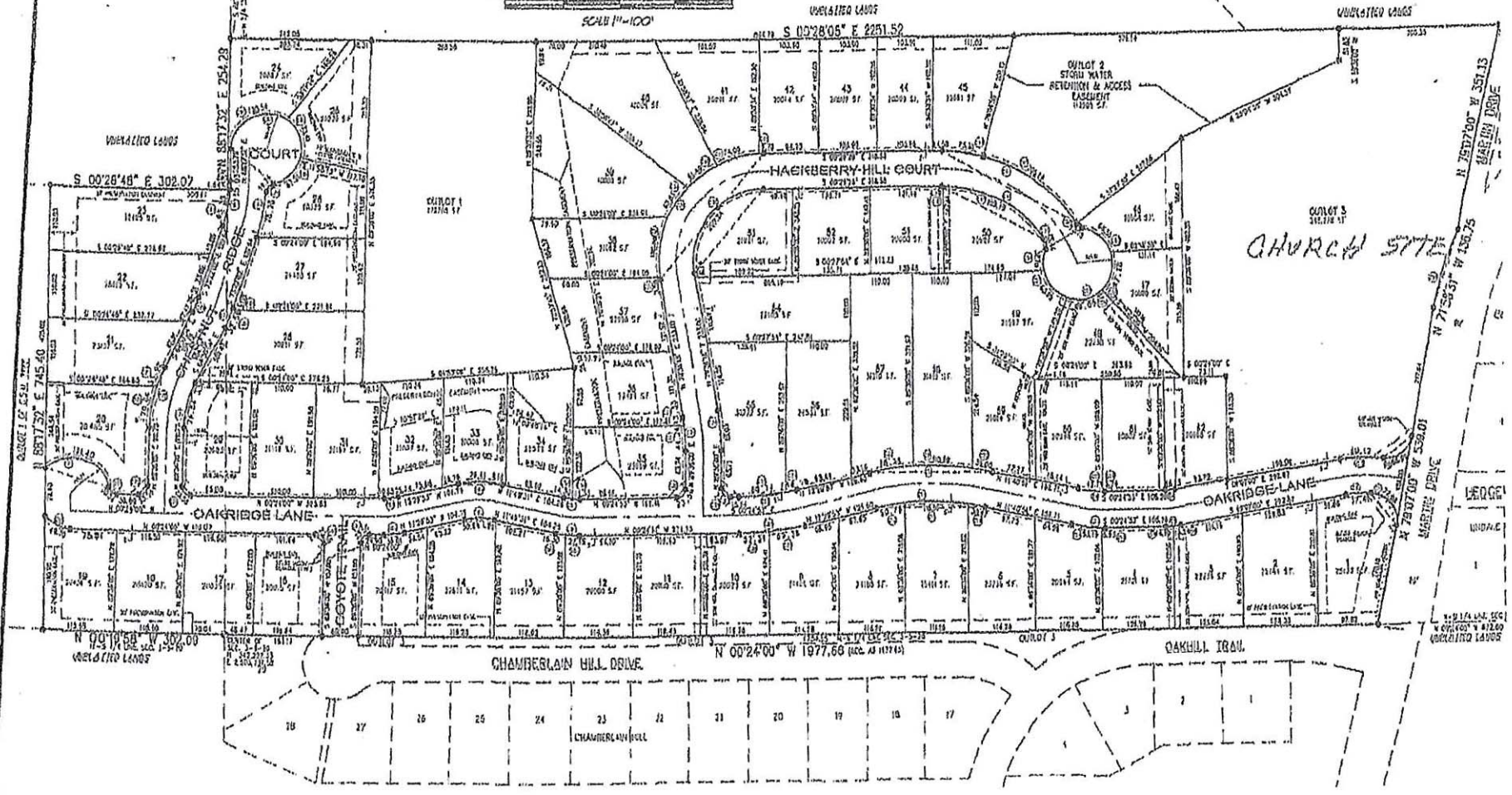
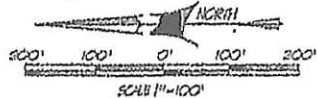


OAKRIDGE GLEN

The Redivision on Lot 1 of CSM No. 10174 Being part of the SW 1/4 Of The NE 1/4 and the NW 1/4 and SW 1/4 of the SE 1/4 of Section 3, Township 5 North, Range 20 East, In the City of Muskego, Waukesha County, Wisconsin.



NOTES:
 OUTLOT 1 OWNED BY HOMEOWNERS ASSOCIATION FOR COOPERATION PURPOSES.
 OUTLOT 2 OWNED BY HOMEOWNERS ASSOCIATION FOR STORAGE PURPOSES.
 OUTLOT 3 OWNED BY DEVELOPER FOR FUTURE INSTITUTIONAL PURPOSES.
 LOTS ZONED R2A ARE 2-UNIT PARCEL LOTS.
 NO VEHICULAR ACCESS TO CHAMBERLAIN HILL DRIVE AND OAKHILL TRAIL FROM LOTS 1-16.

CONCRETE EASMENTS:
 LOTS 1-17, 40-42, 45-49 AND OUTLOT 1 - 162
 LOTS 23-48, 61-64 AND OUTLOT 2 - R2A
 OUTLOT 3 - R2A / O/P
 R2A: Min. 20,000 SF, 116 Avg. Width
 Streets: Min. 40' Street, 15 and 18
 Sidewalks: 15,000 SF, Open Space
 R2A: Min. 16,000 SF, 116 Avg. Width
 Streets: Min. 40' Street, 15 and 18
 Sidewalks: 15,000 SF, Open Space
 R2A: Min. 12,000 SF, 116 Avg. Width
 Streets: Min. 40' Street, 15 and 18
 Sidewalks: 7,000 SF, Open Space

LEGEND AND NOTES:
 BEARING BASE FOR THIS PLAN IS GRID NORTH, WISCONSIN COORDINATE BY 617M, SOUTH ZONE, BASED UPON NAD 83. THE NORTH-SOUTH 1/4 LINE OF SECTION 09-40-18 IS ASSUMED TO BEAT N 0°24'00" W.
 ALL DISTANCES MEASURED TO THE NEAREST HUNDREDTH OF A FOOT.
 ALL ANGLES TURNED TO THE NEAREST SECOND AND COMPUTED TO THE NEAREST HALF SECOND.
 6. CENTER A 2-3/8" O.D. IRON PIPE STAKE 14" IN LENGTH, WEIGHT OF 3.66 LB. A.L.R.
 ALL OTHER LOT CORNERS IN QUARTER SECTION PIPE STAKE, WEIGHT OF 1.136 LB. A.L.R.
 [Symbol] DENOTES FOUND 1" O.D. IR
 [Symbol] DENOTES AN EASEMENT OR
 [Symbol] DENOTES NO VEHICULAR AD
 [Symbol] DENOTES CONCRETE FOUND